

# EZ2<sup>®</sup> Connect Fx

The smart way to nucleic acid extraction for human ID and forensics



# A whole new level of efficiency and quality

Overview

Highlights

Simple Workflow

Safety Features

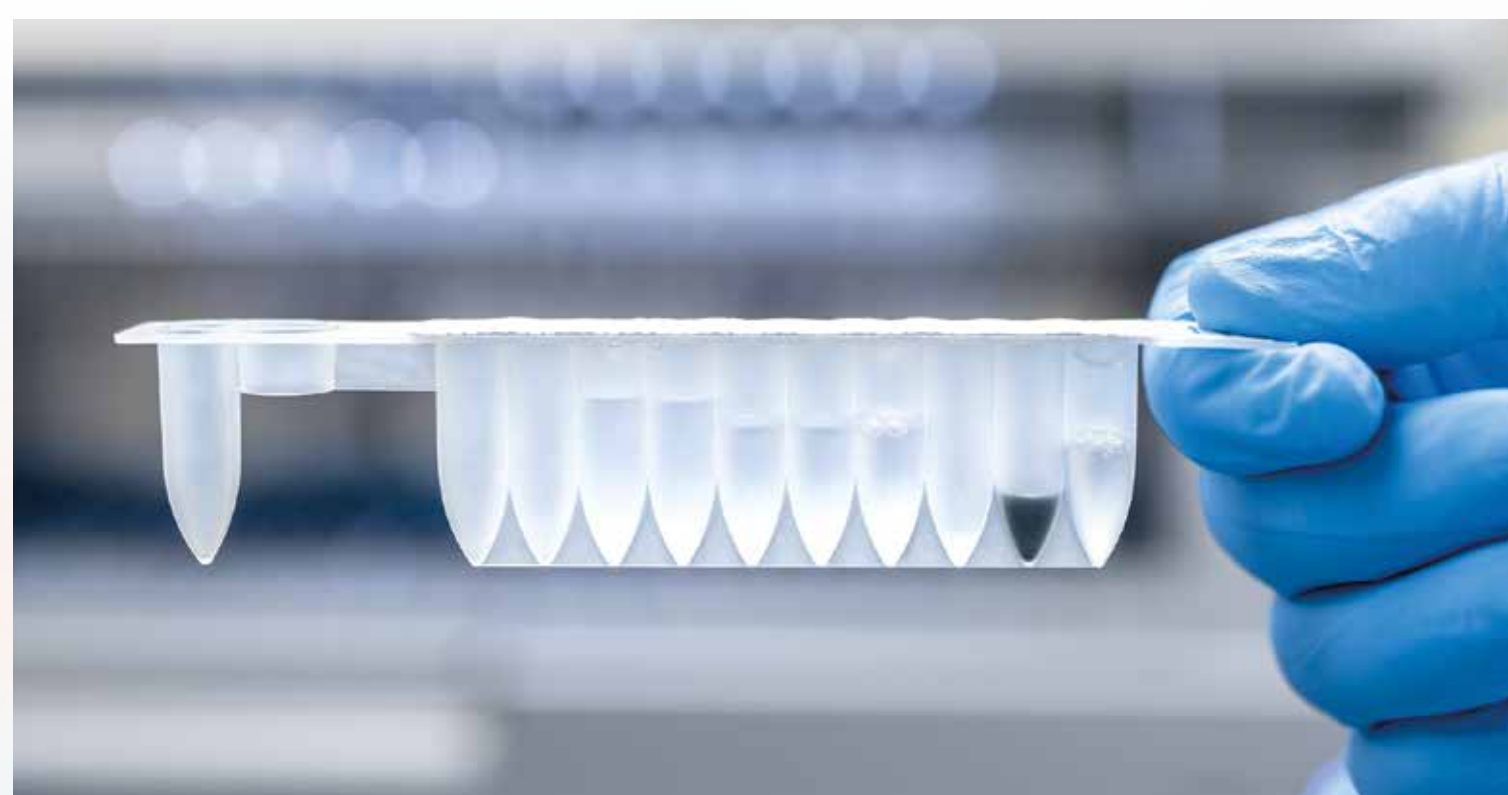
Applications

Principle

Trusted Chemistry

Remote Connectivity

Launch Information



## Maximum process safety

Ready-to-use forensic grade (ISO18385) reagent cartridges to boost reproducibility and throughput



## Full traceability

External barcode reader and internal camera for load checks and sample recovery capabilities



## EZ1<sup>®</sup> compatibility

Isolate assay-ready DNA from forensic samples using EZ1&2<sup>®</sup> DNA Investigator<sup>®</sup> Kit

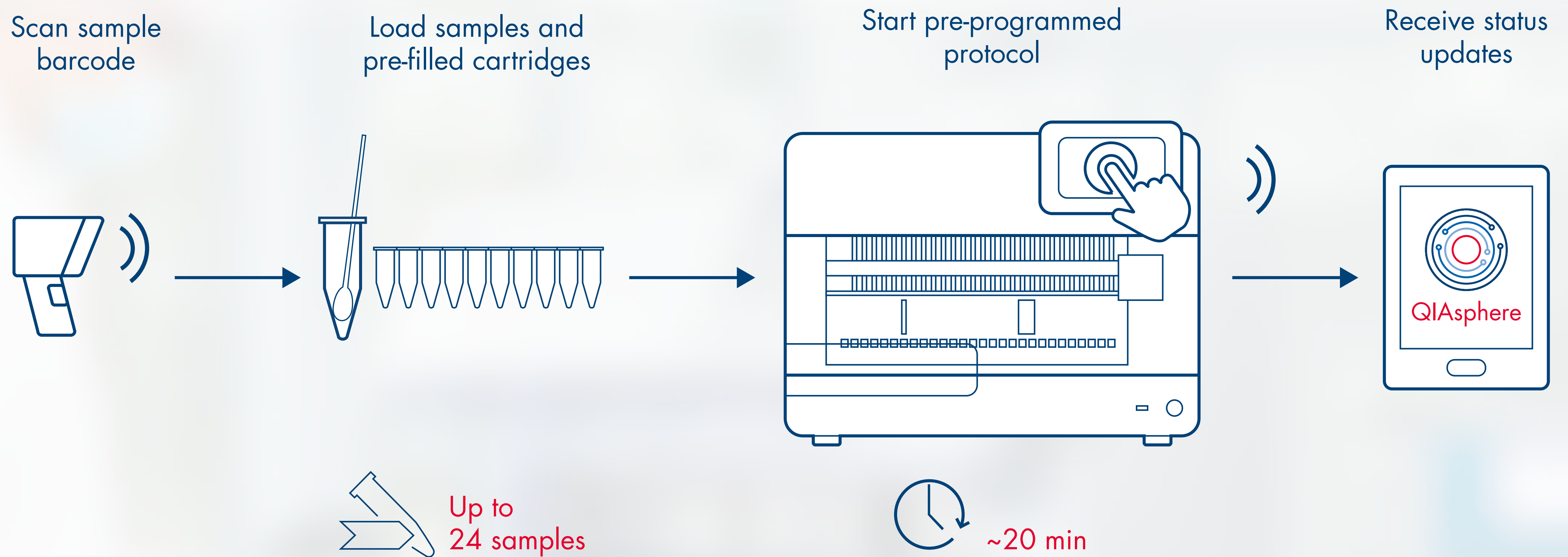


## Cloud connectivity

QIASphere<sup>®</sup> and LIMS connectivity for remote monitoring, reducing instrument down-time

# Fast workflow with flexible throughput

- Overview
- Highlights
- Simple Workflow
- Safety Features
- Applications
- Principle
- Trusted Chemistry
- Remote Connectivity
- Launch Information



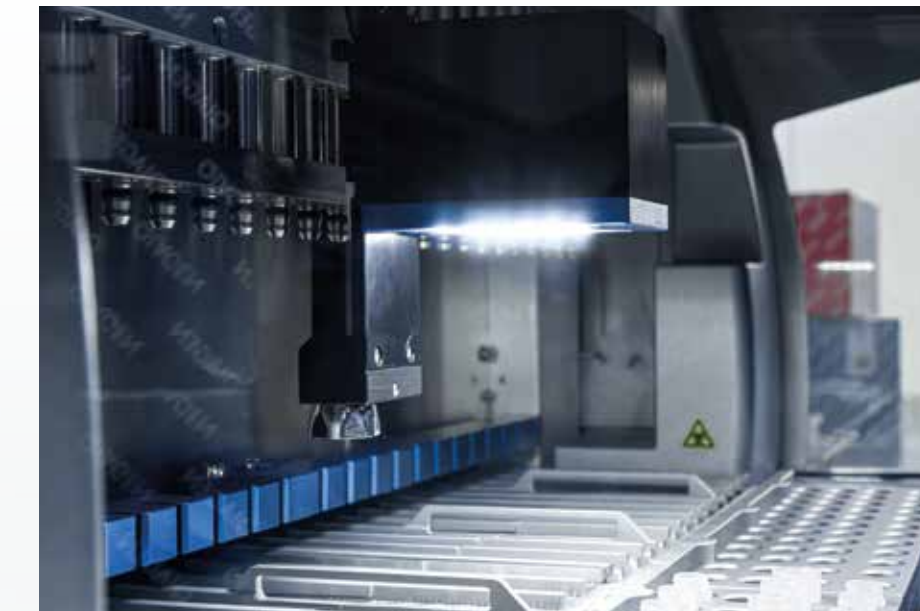
✓ Get high-quality nucleic acids in as short as 20 minutes.

# Meet the highest standards of process safety

- Overview
- Highlights
- Simple Workflow
- Safety Features
- Applications
- Principle
- Trusted Chemistry
- Remote Connectivity
- Launch Information



**Pre-filled, forensic grade reagent cartridges**  
Eliminate errors and variability in preparation and loading while maximizing efficiency



**High-emission UV-LED**  
Full worktable decontamination in one easy step with improved LED technology



**Intuitive user interface**  
Run the correct protocol easily, without the need for program cards



**Sample recovery function**  
Recover DNA from samples in the event of an error or aborted run using easy-to-follow instructions



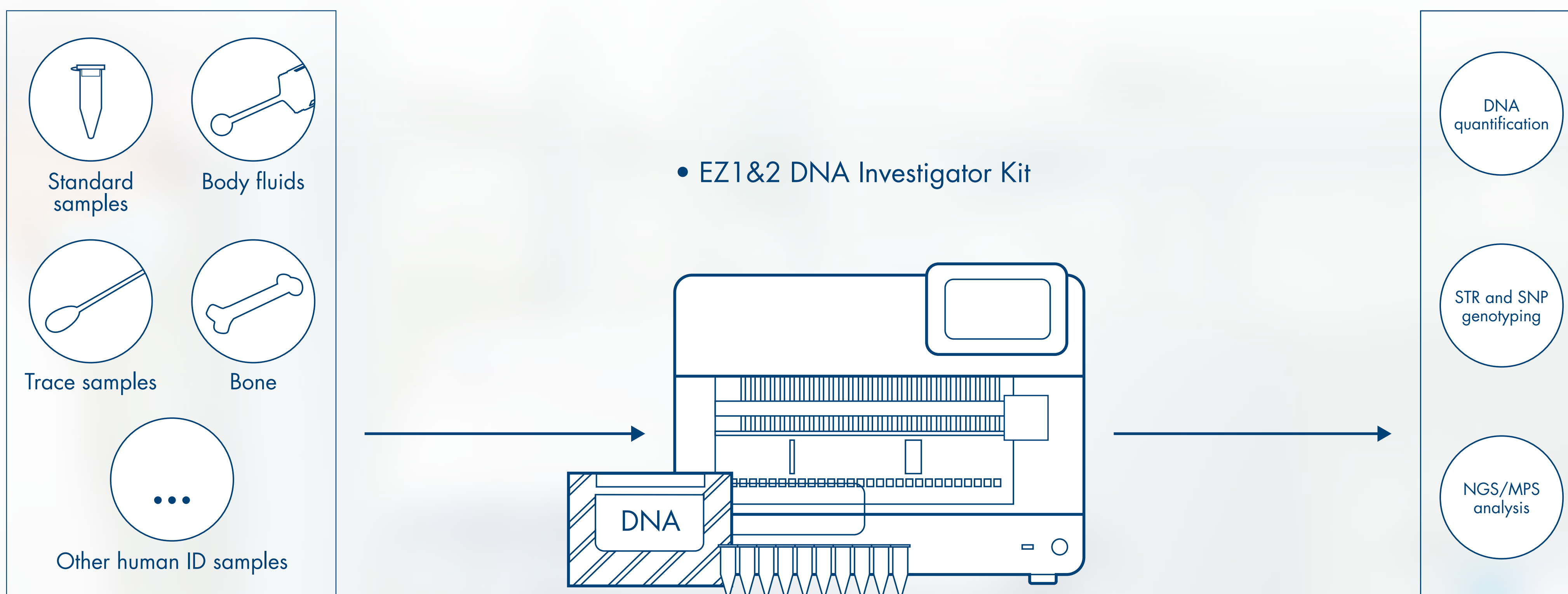
**Internal camera for load checks**  
Guarantee sample processing with an internal camera to scan for proper loading of samples and consumables



Feel secure and confident in the reproducibility of your output.

# One instrument, many applications

- Overview
- Highlights
- Simple Workflow
- Safety Features
- Applications
- Principle
- Trusted Chemistry
- Remote Connectivity
- Launch Information



✔ Process a wide range of samples for use in many downstream forensic applications.

Overview

Highlights

Simple Workflow

Safety Features

Applications

Principle

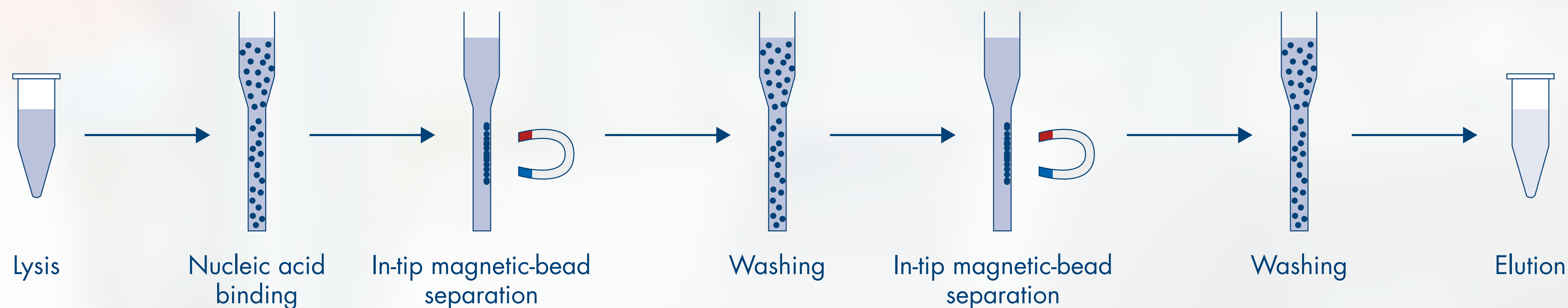
Trusted Chemistry

Remote Connectivity

Launch Information

# Built from proven EZ1 technology

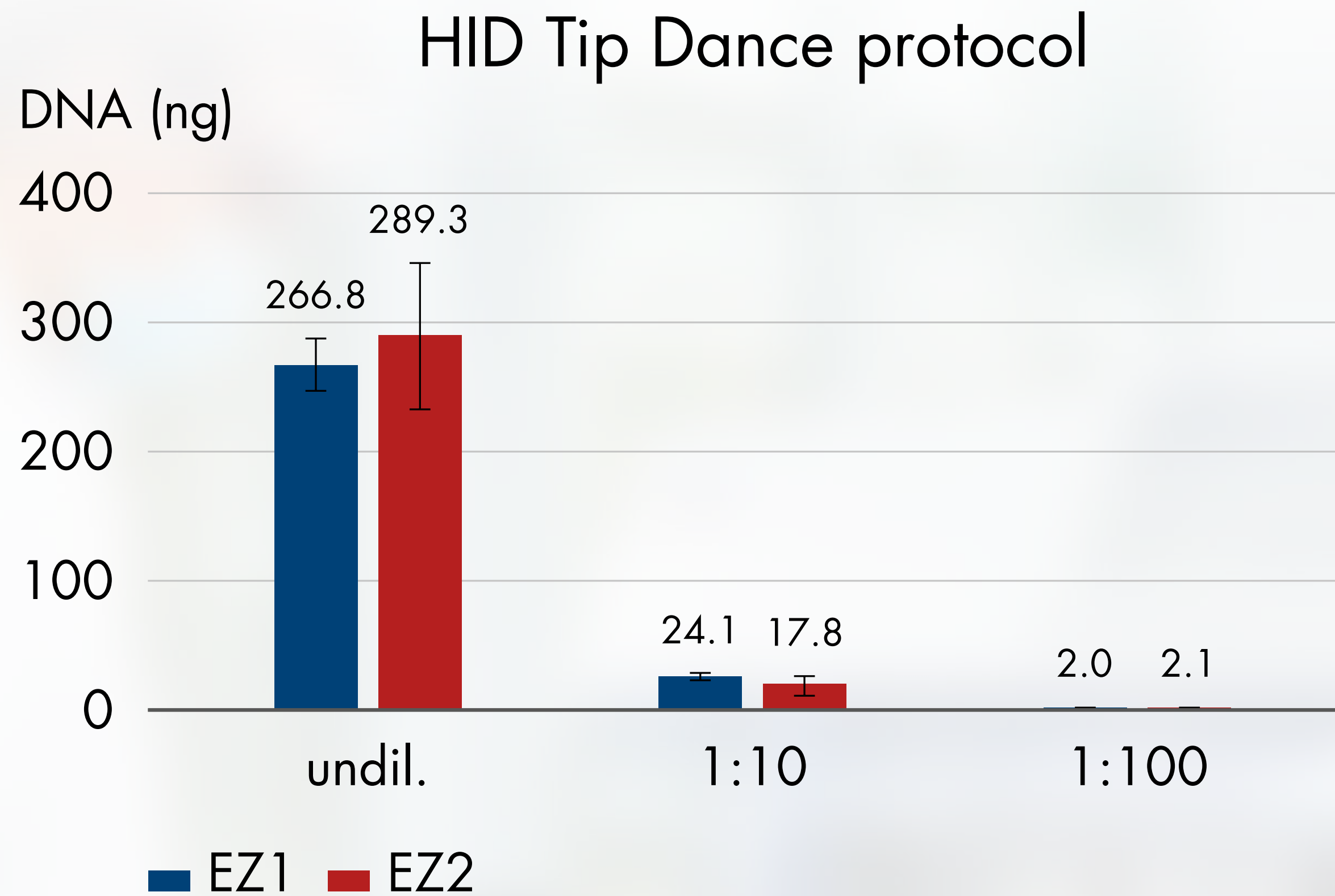
Get the best of our EZ1 Advanced XL technology with added ease-of-use and throughput.



Boost the ease, efficiency and reproducibility of the magnetic-bead purification you know and trust.

- Overview
- Highlights
- Simple Workflow
- Safety Features
- Applications
- Principle
- Trusted Chemistry
- Remote Connectivity
- Launch Information

# Dedicated, pre-validated forensics protocols



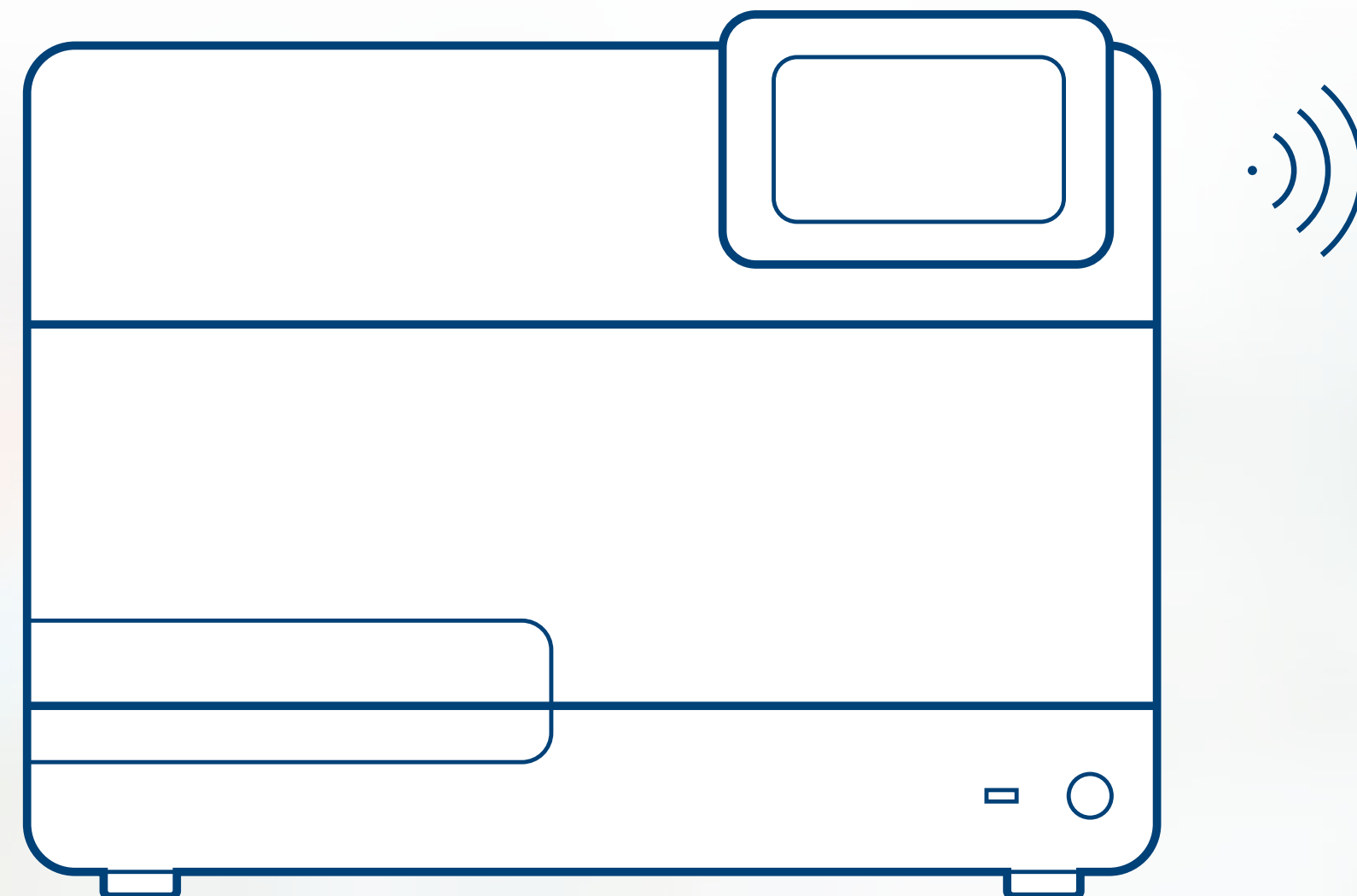
Benefit from human ID-tailored protocols vetted on the EZ1 Advanced XL, as well as new protocols for reduced elution volumes or large working volumes.



Easily access a variety of dedicated human ID and forensics protocols at the push of a button.


- Overview
- Highlights
- Simple Workflow
- Safety Features
- Applications
- Principle
- Trusted Chemistry
- Remote Connectivity
- Launch Information

# Greater productivity from outside the lab



- Keep track of the instrument status with EZ2 push notifications
- Download run reports
- Update software patches remotely
- Manage instruments and workgroups via mobile app




 Improve your lab productivity and efficiency through remote lab-instrument monitoring.



# Simplicity. Safety. Speed.



Overview

Highlights

Simple Workflow

Safety Features

Applications

Principle

Trusted Chemistry

Remote Connectivity

Launch Information

The EZ2 Connect Fx is intended for molecular biology applications. This product is not intended for the diagnosis, prevention or treatment of a disease.

For up-to-date licensing information and product-specific disclaimers, see the respective QIAGEN kit instructions for use or user operator manual. QIAGEN instructions for use and user manuals are available at [www.qiagen.com](http://www.qiagen.com) or can be requested from QIAGEN Technical Services or your local distributor.

Trademarks: QIAGEN®, Sample to Insight®, QIASphere®, EZ1®, EZ1&2®, EZ2® (QIAGEN Group). Registered names, trademarks, etc. used in this document, even when not specifically marked as such, are not to be considered unprotected by law.

© 2021 QIAGEN, all rights reserved. PROM-19448-001 10/2021

Ordering [www.qiagen.com/shop](http://www.qiagen.com/shop) | Technical Support [support.qiagen.com](http://support.qiagen.com) | Website [www.qiagen.com](http://www.qiagen.com)